

Fit - Triq ma'

Kinu



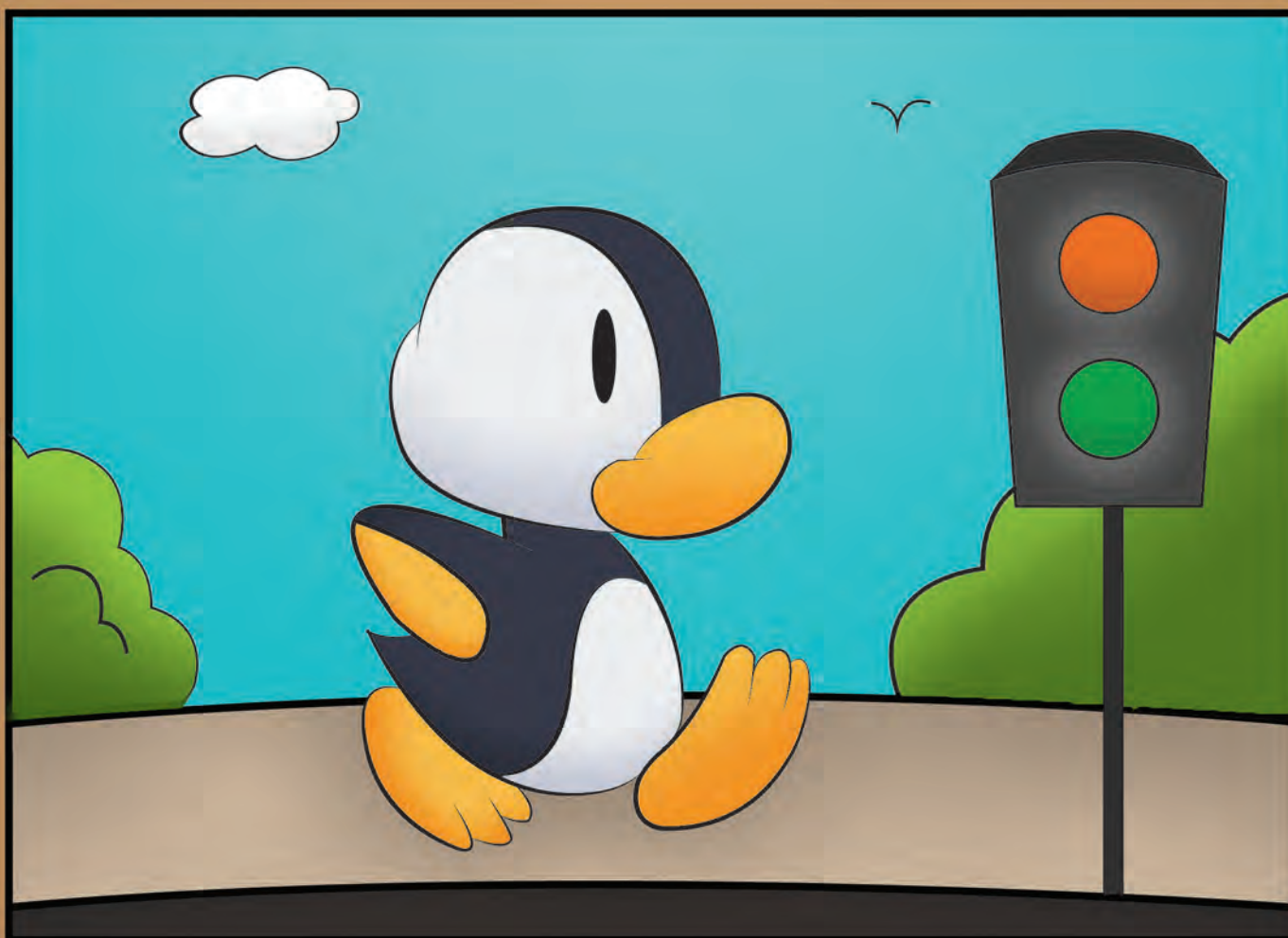
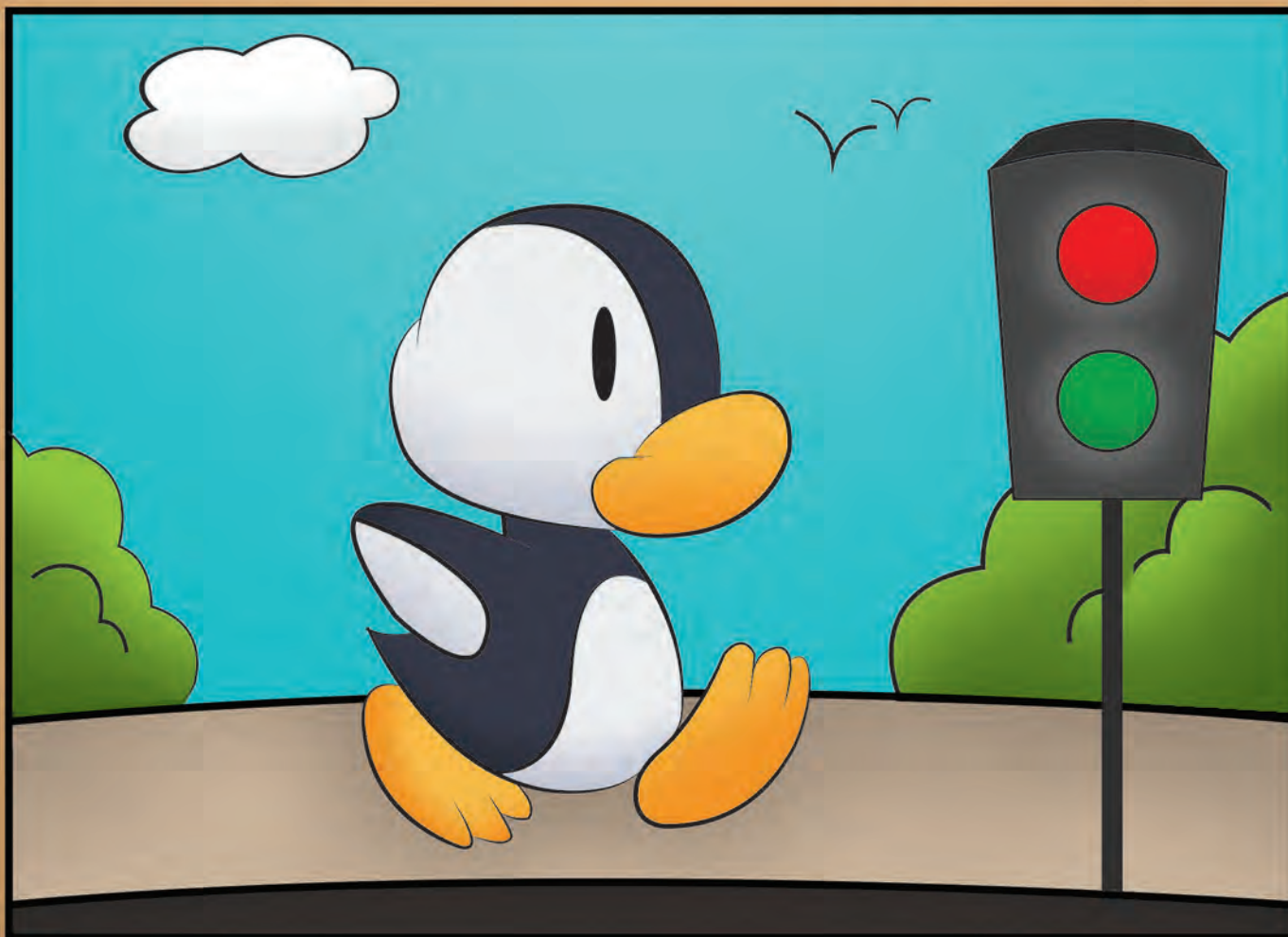
Jien jisimni Kinu
u inti?



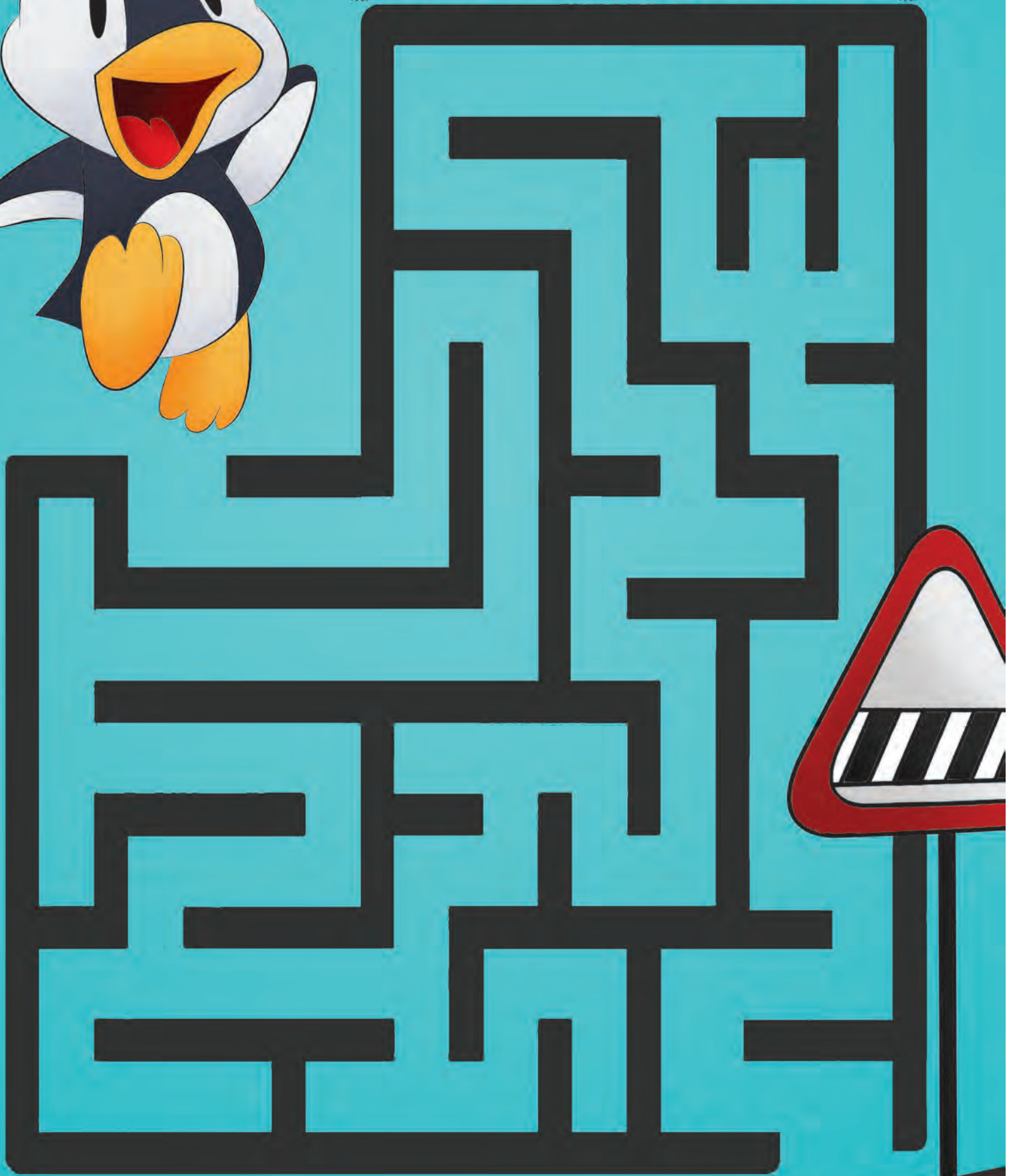
Aghzel-istampa paricc' Kinu.



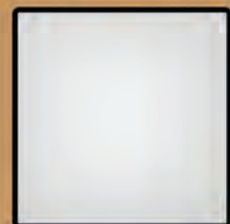
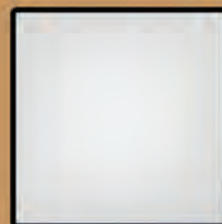
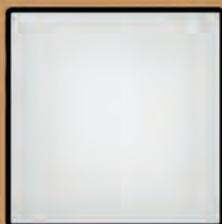
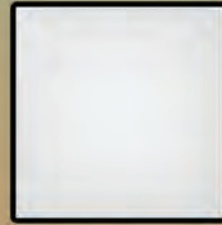
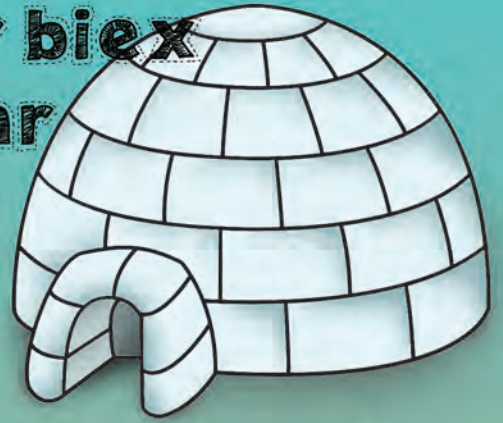
Sib hames differenzi fl-istampa ta' taht.



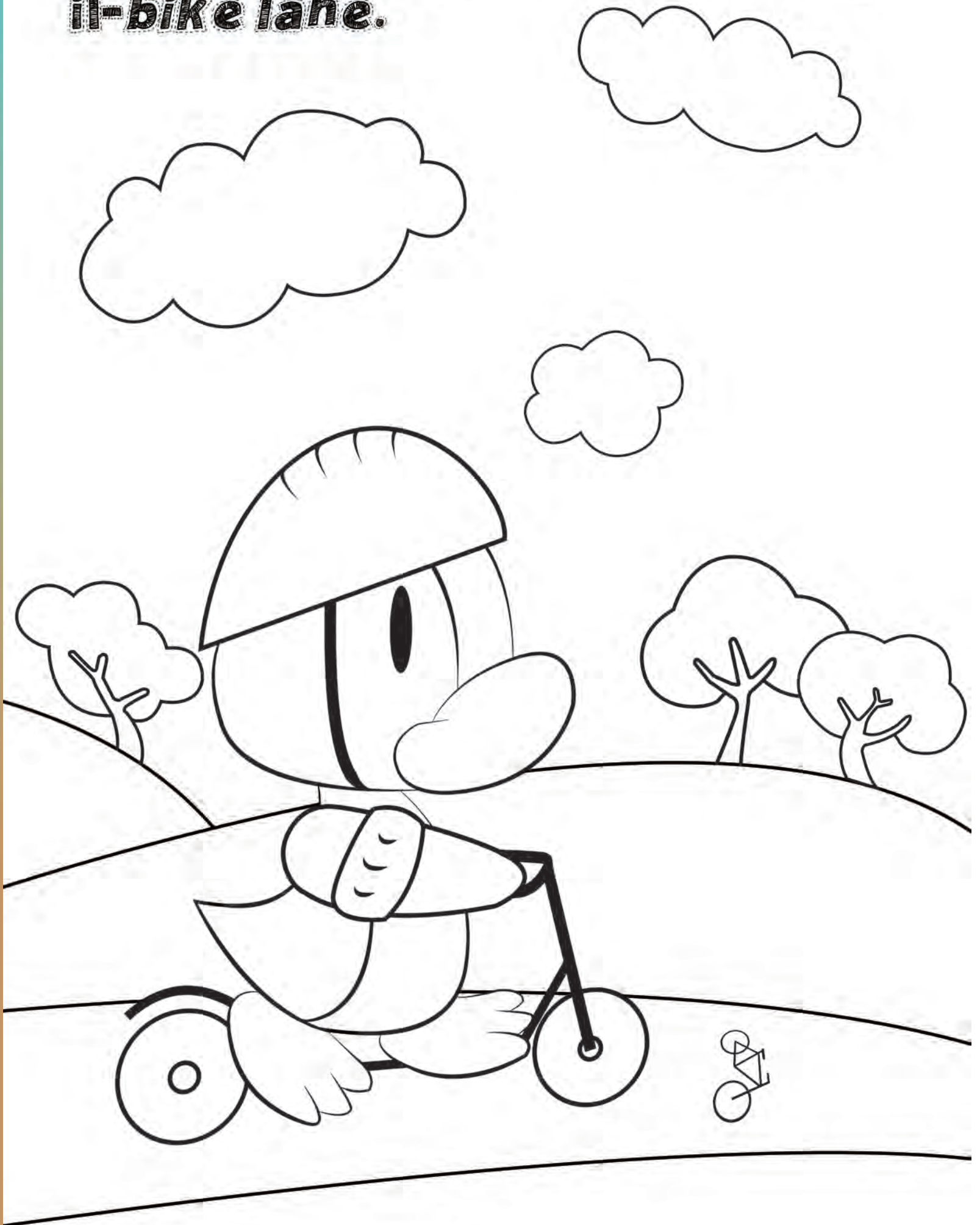
Ghin lil Kinu jsib it-triq
ghaz-zebra crossing.



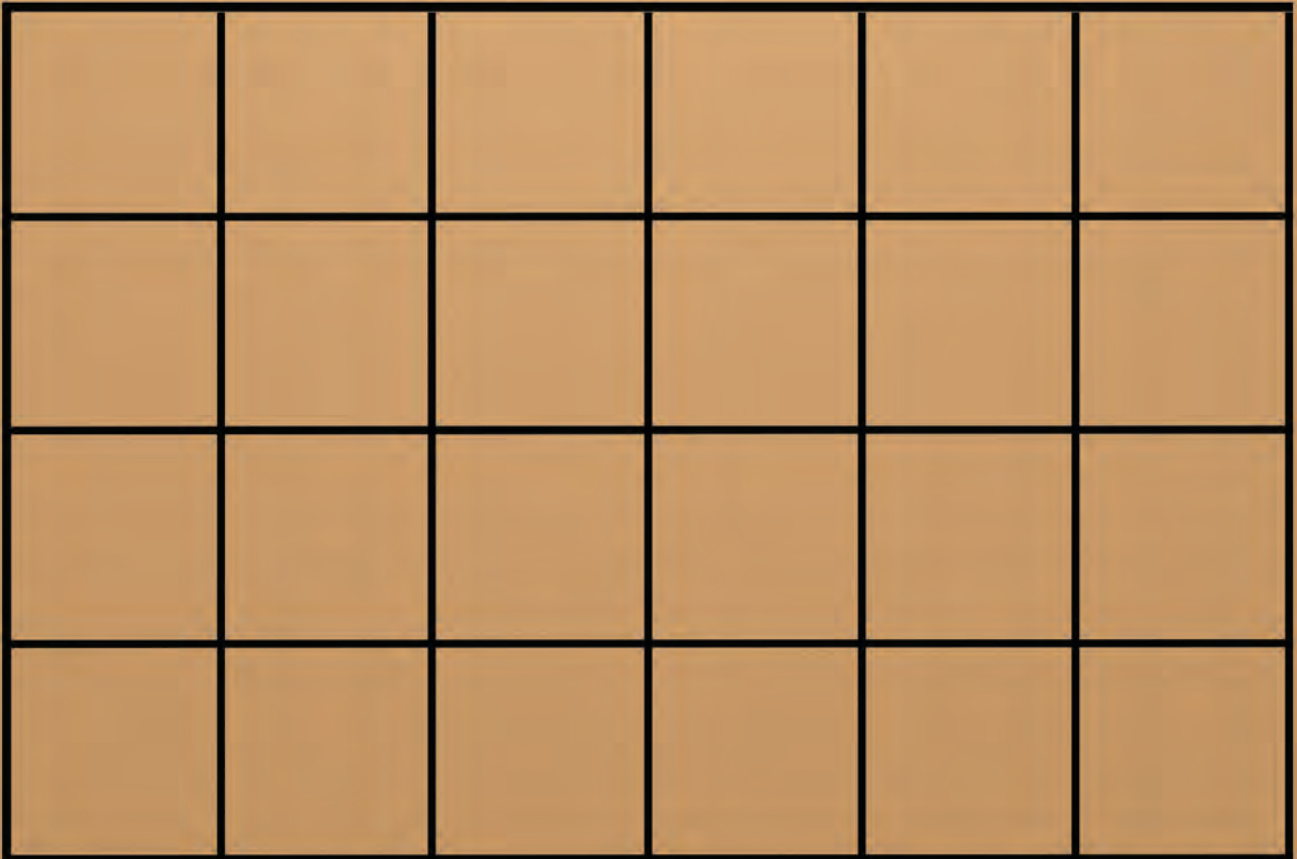
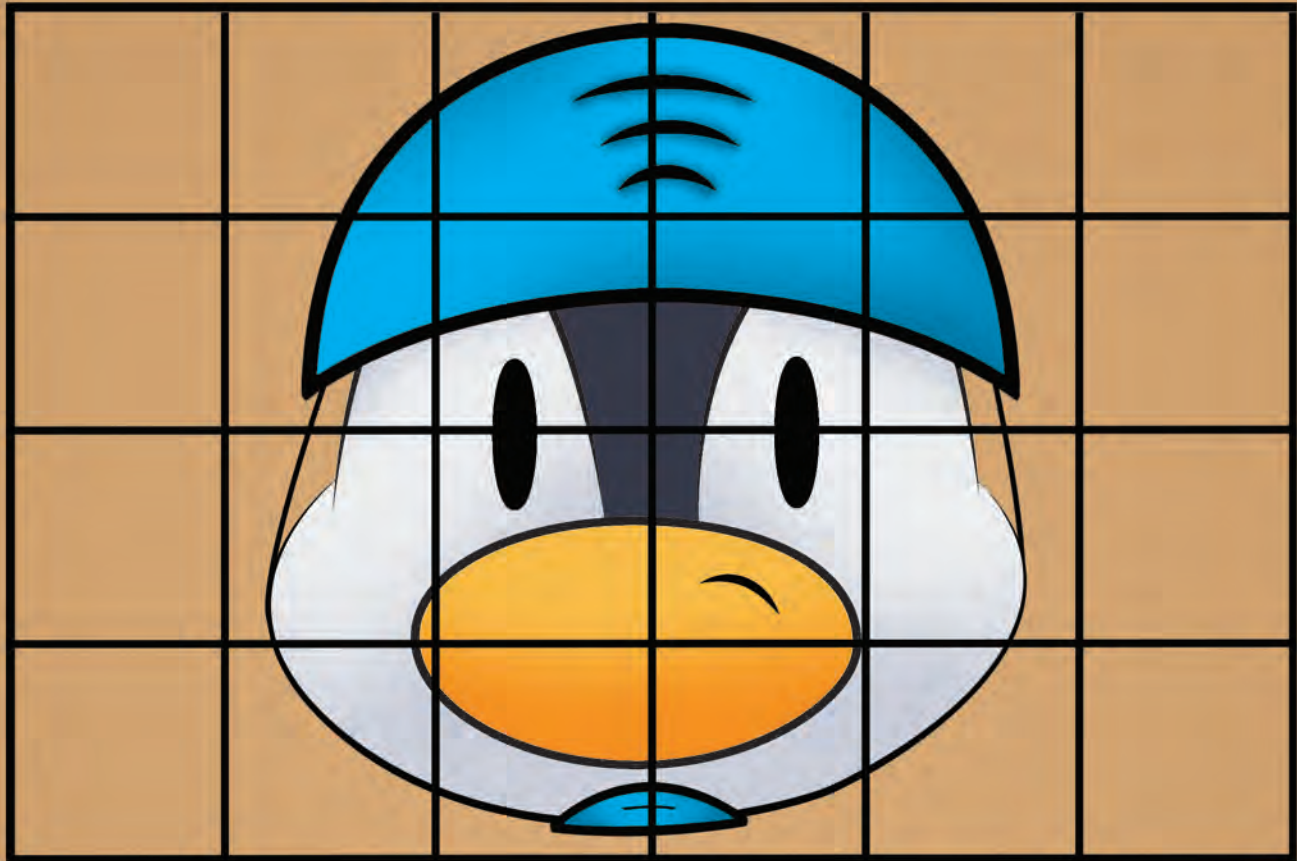
Aqsam fuq id-dawl ahdar biex Kinu jkun jista' jasal id-dar



**Piŋgi lil Kinu ghaddej minn fuq
il-bike lane.**



Pingi u kkopja lil Kinu bl-elmu fil-
kaxxa ta' taht.



Sib il-kliem:

- Bankina

- Ieqaf

- Hares

- Isma'

- Sinjali

- Zebra Crossing

- Traffic lights.

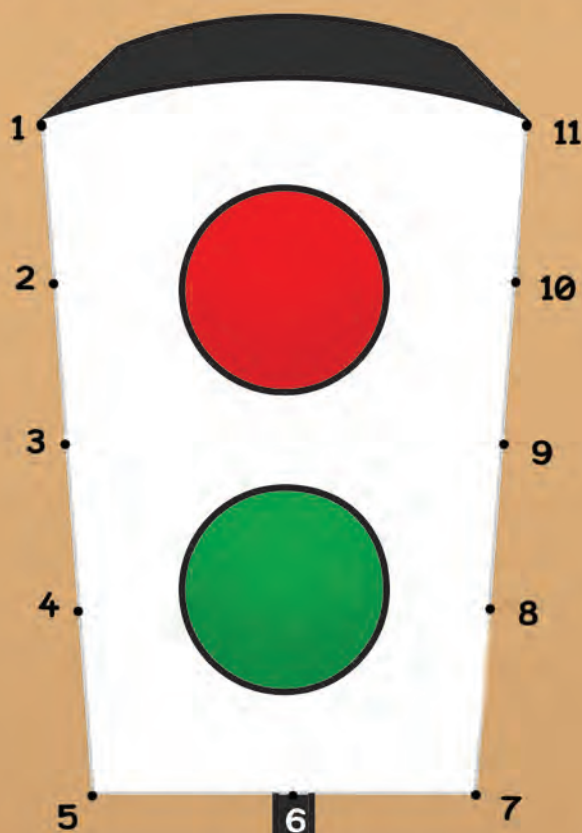
- Rota

- Elmu



			Z	W	E	X	Q	T		
L			E	O	T	R	A	R		S
O	E	T	B	S	I	N	J	A	L	P
N	L	A	R	N	S	R	C	F	A	A
I	M	J	A	F	M	O	V	F	G	R
E	U	R	C	G	H	A	P	N	I	O
A	H	A	R	E	S	E	N	C	A	T
T	I	E	P	O	B	D	T	C	L	A
K	R	O	S	C	N	I	R	I	N	E
E	V	T	S	Z	L	K	A	G	P	N
D	A	N	I	K	N	A	B	H	O	Q
C	R	A	N	L	P	H	Z	T	I	R
	L	E	G	O	N	I	S	N	A	D

Ghaqqad in-numri tat-tabelli.



Pingi lil Kinu fil-karozza ma' Ġigi.



Immarka t-linja t-tajba li taqbel mal-istampa.



Pingii-gakketta ta' Kinu ta' lewn
isfar.



Pinggi lil kinu matul il-lejl.



Qabbel il-kliem mal-istampa billi
timmarka sinjal.



Seatbelt



Tabelli

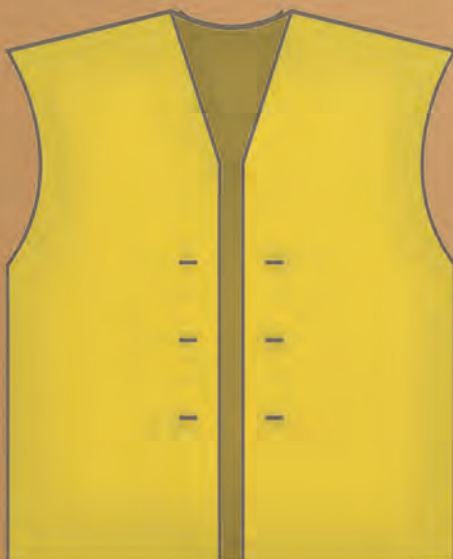


Kinu

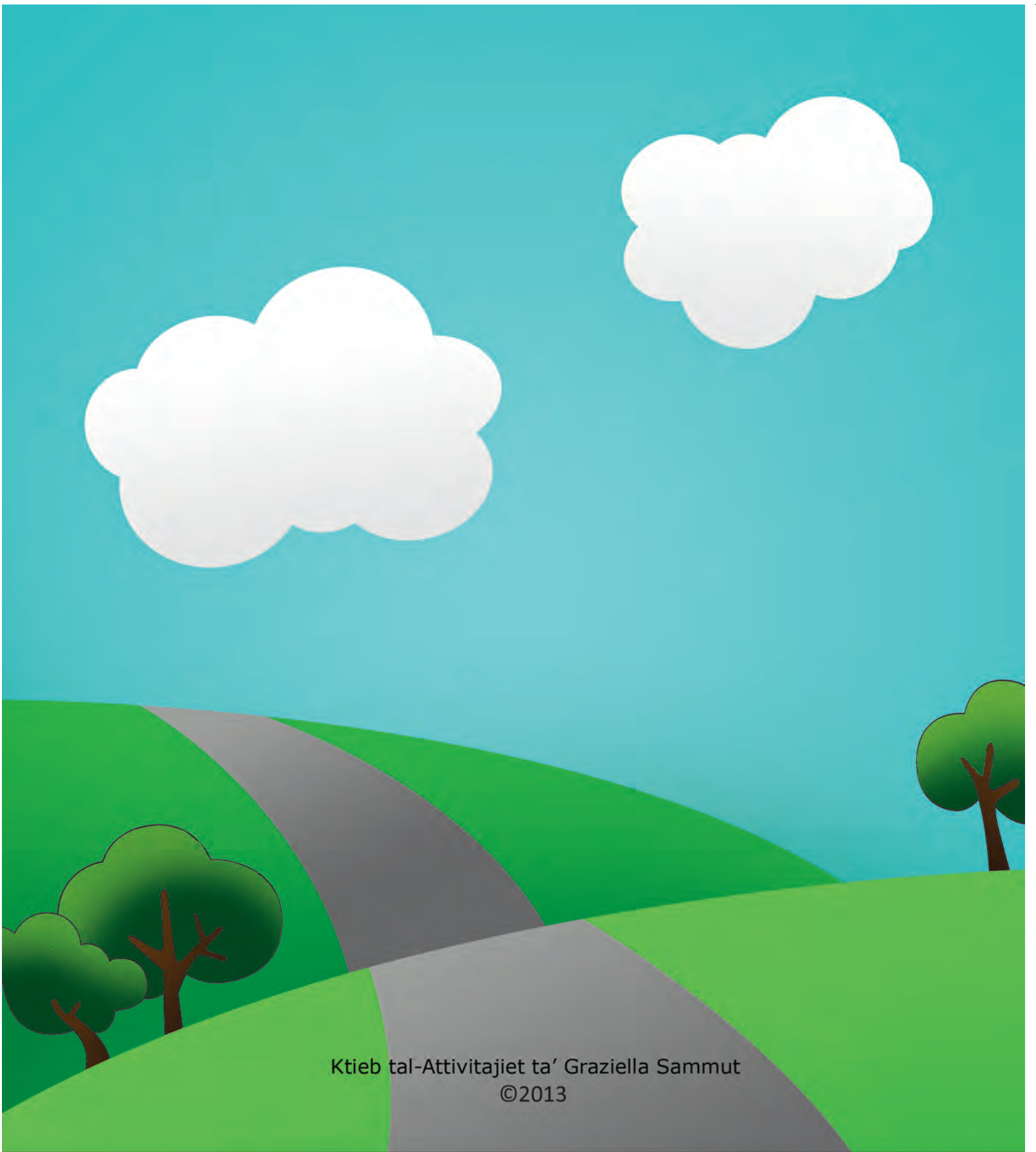


Zebra
Crossing

Ġakketta



Elmu



Ktieb tal-Attivitajiet ta' Graziella Sammut
©2013



Kummissarju għat-Tfal
Commissioner for Children

